

U.S. Fish and  
Wildlife  
Service

Allan Brown

Assistant Regional Director, Fish and  
Aquatic Conservation Program

Southeast Region

Atlanta, GA

# Federal Budget Process

# Federal Budget Process

1. President's Budget Request

# Federal Budget Process

1. President's Budget Request
2. Budget resolution



# Federal Budget Process

1. President's Budget Request
2. Budget resolution
3. Appropriations bills

# Federal Budget Process

1. President's Budget Request
2. Budget resolution
3. Appropriations bills
4. Authorization bills

# Federal Budget Process

1. President's Budget Request
2. Budget resolution
3. Appropriations bills
4. Authorization bills
5. Revenue measures

# Federal Budget Process

1. President's Budget Request
2. Budget resolution
3. Appropriations bills
4. Authorization bills
5. Revenue measures
6. Budget reconciliation

# Federal Budget Process

1. President's Budget Request
2. Budget resolution
3. Appropriations bills
4. Authorization bills
5. Revenue measures
6. Budget reconciliation
7. Debt limit legislation and raising the U.S. debt ceiling

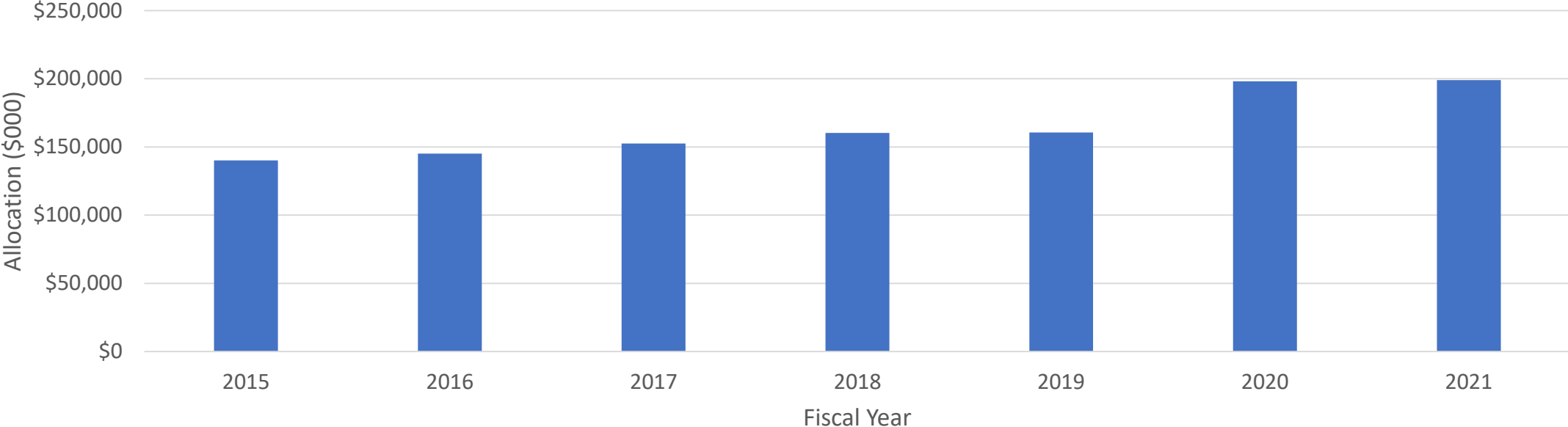
Subactivity	APPROPRIATION			FY 2021	FY 2022	FY 2022 House Passed		FY 2022 Senate Mark	
	ACTIVITY	SUBACTIVITY	PROGRAM ELEMENT	Enacted	President's Budget	Change from FY 2021 Enacted	Total House Passed	Change from FY 2021 Enacted	Total Senate Mark
	<b>RESOURCE MANAGEMENT 14-1611</b>								
	<b>FISH &amp; AQUATIC CONSERVATION</b>								
1311	<b>National Fish Hatchery Operations</b>								
			Aquatic Animal Drug Approval Partnership	1,200	800	0	1,200	-400	800
			Great Lakes Consent Decree	550	550	0	550	0	550
			National Wild Fish Health Surveys	1,430	1,430	0	1,430	0	1,430
			Pacific Salmon Treaty	4,700	2,200	0	4,700	0	4,700
			<i>Yukon River Salmon Agreement</i>	1,556	556	0	1,556	0	1,556
			<i>Pacific Salmon Treaty</i>	3,144	1,644	0	3,144	0	3,144
			Washington State Mass Marking	1,475	1,475	0	1,475	0	1,475
			Klamath Restoration	3,750	3,750	0	3,750	4,000	7,750
			Youth and Careers in Nature	0	0	0	0	0	0
			Warm Springs Fish Health Center					5,000	5,000
			General Program Activities	52,446	71,569	10,123	62,569	9,623	62,069
			<b>Total - National Fish Hatchery Operations</b>	<b>65,551</b>	<b>81,774</b>	<b>10,123</b>	<b>75,674</b>	<b>18,223</b>	<b>83,774</b>
	<b>Maintenance and Equipment</b>								
1321	<b>NFHS Maintenance and Equipment</b>								
			Annual Maintenance	8,079	16,303	8,224	16,303	4,224	12,303
			Deferred Maintenance	16,137	31,137	15,000	31,137	13,000	29,137
			Equipment Replacement	1,088	2,588	500	1,588	1,500	2,588
			<b>Total - NFHS Maintenance &amp; Equipment</b>	<b>25,304</b>	<b>50,028</b>	<b>23,724</b>	<b>49,028</b>	<b>18,724</b>	<b>44,028</b>
1322	<b>FWCO Maintenance and Equipment</b>								<b>200</b>
			General Program Activities	518	518	0	518	0	518
			<b>Total - FWCO Maintenance &amp; Equipment</b>	<b>518</b>	<b>518</b>	<b>0</b>	<b>518</b>	<b>0</b>	<b>518</b>
			<b>Total - MAINTENANCE AND EQUIPMENT</b>	<b>25,822</b>	<b>50,546</b>	<b>23,724</b>	<b>49,546</b>	<b>18,724</b>	<b>44,546</b>
	<b>Aquatic Habitat and Species Conservation (1330)</b>								
1334	<b>Habitat Assessment and Restoration</b>								
			Chehalis Fisheries Restoration	268	268	0	268	0	268
			Delaware River Basin Conservation Act	10,000	10,000	2,500	12,500	1,000	11,000
			Fish Passage Improvements	18,598	18,598	0	18,598	402	19,000
			Klamath Basin Restoration Agreement	2,750	2,750	0	2,750	7,750	10,500
			National Fish Habitat Action Plan	6,664	7,664	1,000	7,664	1,000	7,664
			Youth	0	0	0	0	0	0
			Truckee River Operating Agreement		200	200	200	200	200
			General Program Activities	4,009	4,346	337	4,346	337	4,346
			<b>Total - Habitat Assessment and Restoration</b>	<b>42,289</b>	<b>43,826</b>	<b>4,037</b>	<b>46,326</b>	<b>10,689</b>	<b>52,978</b>
1335	<b>Population Assessment and Cooperative Management</b>								
			Alaska Fisheries Subsistence	9,554	9,554	0	9,554	0	9,554
			Atlantic Salmon Restoration	533	533	0	533	0	533
			Great Lakes Consent Decree	890	1,000	110	1,000	110	1,000
			Great Lakes F&W Restoration Program	1,000	890	1,000	2,000	0	1,000
			Lake Champlain Sea Lamprey	818	0	0	818	0	818
			National Wild Fish Health Surveys	36	36	0	36	0	36
			Penobscot River Restoration	458	458	0	458	0	458
			Pacific Salmon Treaty	150	0	0	150	-150	0
			Regional Mark Processing Center	226	226	0	226	0	226
			Yukon River Salmon Treaty	2,692	2,692	0	2,692	0	2,692
			Connecticut River Atlantic Salmon Commission					500	500
			General Program Activities	15,435	18,076	713	16,148	-72	15,363
			<i>Snakehead Eradication</i>	250	0	750	1,000	-250	0
			<i>General Program Activities</i>	15,185	18,076	-37	15,148	178	15,363
			<b>Total - Population Assess. and Cooperative Mgmt.</b>	<b>31,792</b>	<b>33,465</b>	<b>1,823</b>	<b>33,615</b>	<b>388</b>	<b>32,180</b>
1336	<b>Aquatic Invasive Species</b>								
			Invasive Carp	22,000	22,000	0	22,000	0	22,000
			Contract Fishing (Invasive Carp)	3,000	3,000	1,000	4,000	0	3,000
			Control and Management	800	800	0	800	0	800
			Ecosystem Restoration - Chesapeake Bay	145	145	0	145	0	145
			Lake Tahoe Restoration	4,088	4,088	2,000	6,088	1,000	5,088
			NISA State/Interstate Plans	2,834	2,834	1,000	3,834	0	2,834
			NISA Implementation/Coordination	1,566	1,566	0	1,566	0	1,566
			Prevention	2,015	6,367	352	2,367	252	2,267
			Sea Lamprey Admin Costs	1,011	1,011	0	1,011	0	1,011
			Quagga-Zebra Mussels	3,500	3,500	0	3,500	0	3,500
			<i>Control and Prevention</i>	2,250	2,250	0	2,250	0	2,250
			<i>NISA State and Interstate Plans</i>	1,250	1,250	0	1,250	0	1,250
			Hydrilla, Eel, and Milfoil Invasive Grasses	200	0	-200	0	800	1,000
			<b>Total - Aquatic Invasive Species</b>	<b>41,159</b>	<b>45,311</b>	<b>4,152</b>	<b>45,311</b>	<b>2,052</b>	<b>43,211</b>
			<b>Total - AQUATIC HABITAT &amp; SPECIES CONSERVATION</b>	<b>115,240</b>	<b>122,602</b>	<b>10,012</b>	<b>125,252</b>	<b>13,129</b>	<b>128,369</b>



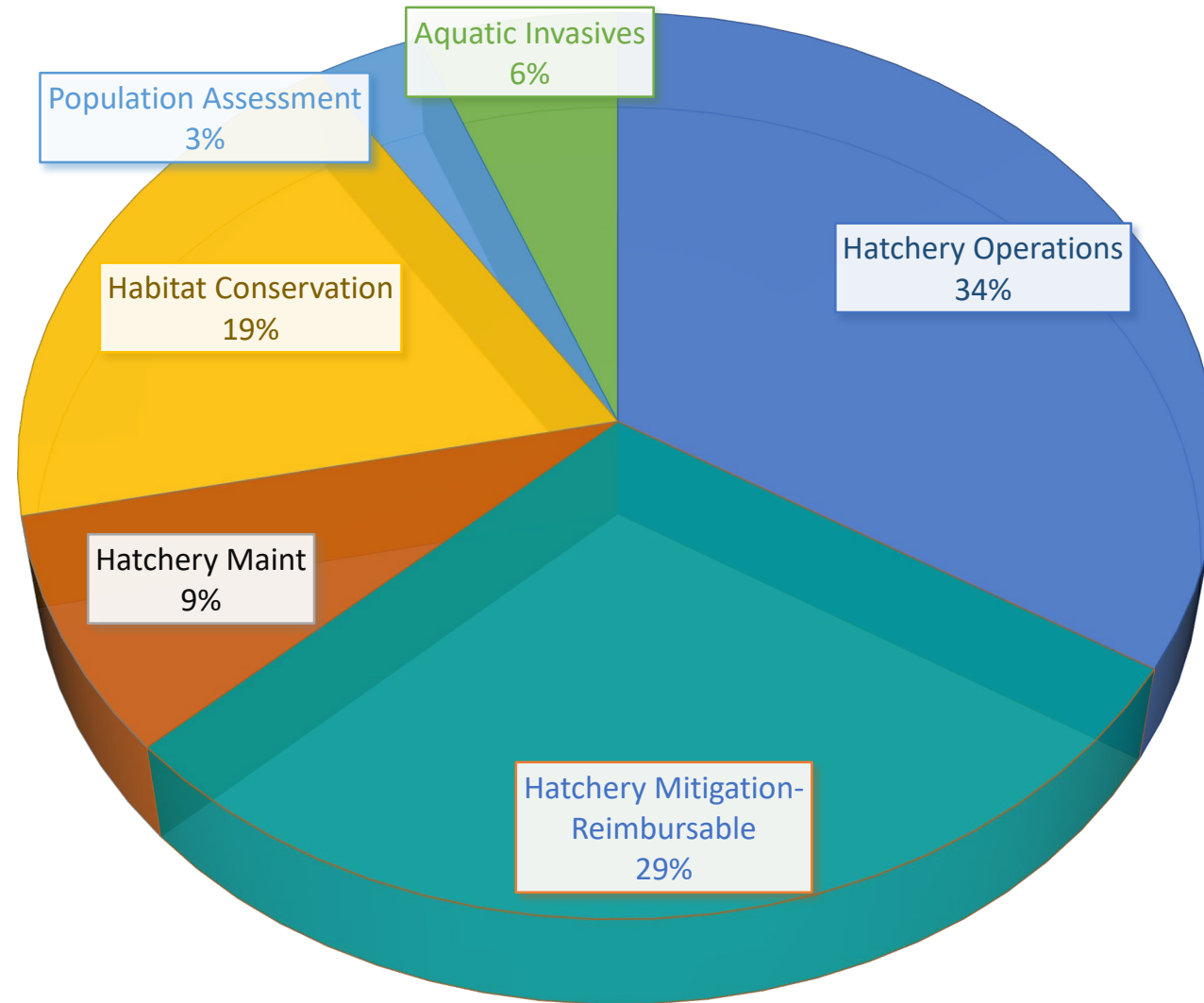
Summary Table (\$000)	FY 2021 Enacted	FY 2022 President's Budget	FY 2022 Enacted	Change from FY 2021 Enacted	Change from FY 2022 PB
<b>Resource Management</b>	<b>1,379,828</b>	<b>1,679,113</b>	<b>1,451,545</b>	<b>71,717</b>	<b>-227,568</b>
<i>Ecological Services</i>	269,666	332,089	277,409	7,743	-54,680
<i>Habitat Conservation</i>	70,219	80,831	71,331	1,112	-9,500
<i>Refuges</i>	503,853	584,399	518,761	14,908	-65,638
<i>Migratory Birds</i>	47,873	66,068	49,568	1,695	-16,500
<i>Law Enforcement</i>	86,860	94,982	89,788	2,928	-5,194
<i>International Affairs</i>	23,032	29,265	25,365	2,333	-3,900
<i>Fish and Aquatic Conservation</i>	206,613	254,922	220,826	14,213	-34,096
<i>Cooperative Landscape Conservation</i>	12,500	18,802	12,802	302	-6,000
<i>Science Support</i>	17,267	36,433	23,233	5,966	-13,200
<i>General Operations</i>	141,945	180,322	155,649	13,704	-24,673
<i>Stewardship Priorities</i>			6,813	6,813	6,813
<i>Damage Recovery Provision</i>		1,000		0	-1,000
<b>Construction</b>	<b>18,193</b>	<b>39,620</b>	<b>12,847</b>	<b>-5,346</b>	<b>-26,773</b>
National Wildlife Refuge Fund	13,228	0	13,228	0	13,228
Cooperative Endangered Species Conservation Fund	43,340	42,700	48,500	2,000	2,000
North American Wetlands Conservation Fund	46,500	46,500	48,500	2,000	2,000
Multinational Species Conservation Fund	18,000	18,000	20,000	2,000	2,000
Neotropical Migratory Birds Conservation Fund	4,910	7,910	5,000	90	-2,910
State and Tribal Wildlife Grants	72,362	82,362	72,612	250	-9,750
<b>Sub-Total</b>	<b>1,596,361</b>	<b>1,916,207</b>	<b>1,647,796</b>	<b>51,435</b>	<b>-268,411</b>
Construction Rescissions			-1,240	-1,240	-1,240
CESCF Cancellation of Balances/Rescissions	-12,500		-945	11,555	-945
<b>Total - FWS Discretionary Funds</b>	<b>1,583,861</b>	<b>1,916,207</b>	<b>1,645,611</b>	<b>61,750</b>	<b>-270,596</b>

Note, the direction in the Report stated that "the language set forth in House Report 117-83 carries the same weight as language included in this joint explanatory statement and should be complied with unless specifically addressed to the contrary in this joint explanatory statement," so this summary includes such direction laid out in the House Report.

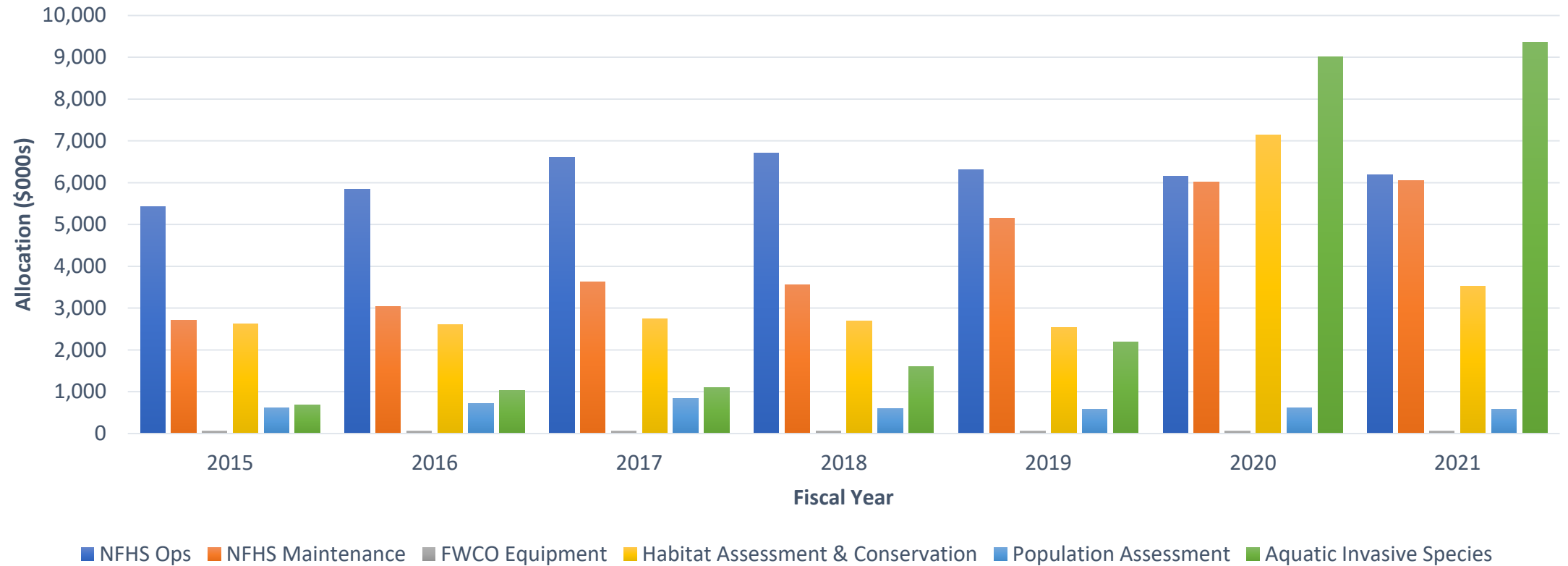
# National Fish and Aquatic Conservation Allocation



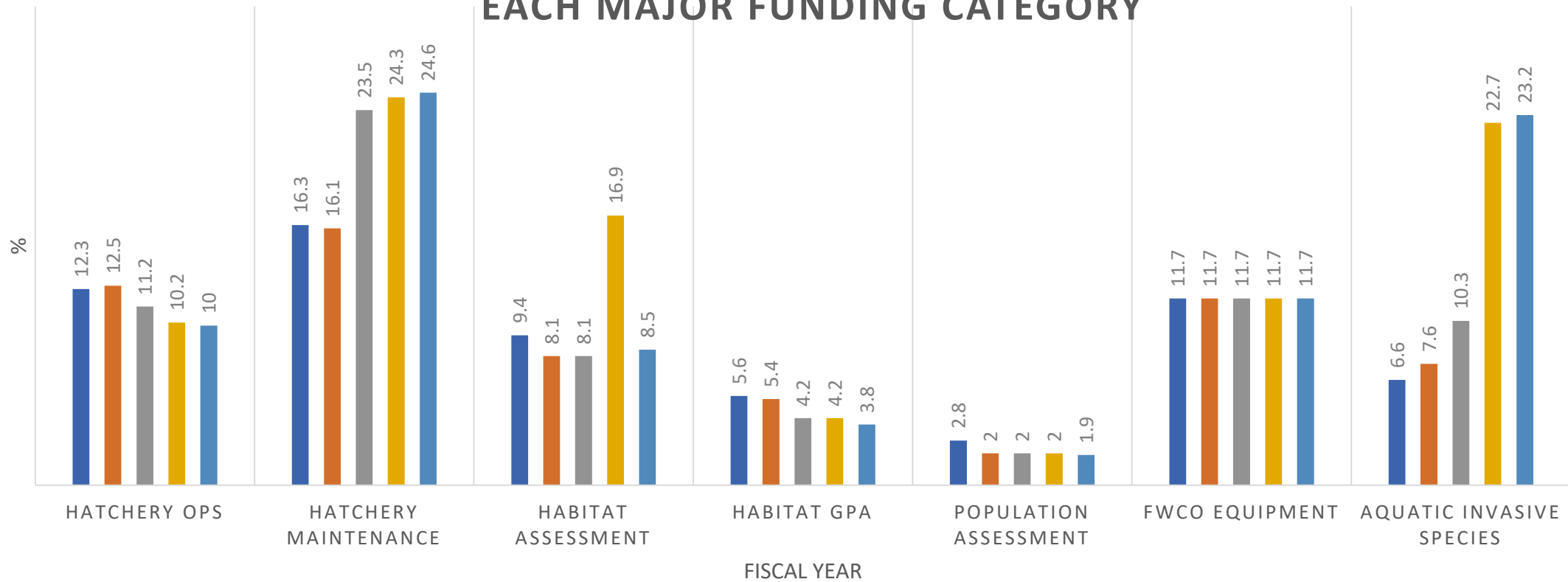
# FY21 OPERATIONAL BUDGET



## Southeast Region FAC Allocation in the Major Funding Categories



## SOUTHEAST REGION'S % OF THE NATIONAL ALLOCATION FOR EACH MAJOR FUNDING CATEGORY





**Mitigation Hatchery Program (Coldwater)**



# MITIGATION

Corps of Engineers - \$4,018,807

Tennessee Valley Authority - \$933,377

- 28 projects in AR-GA-IN-KY-OK-TN
  - Rainbow trout – 2,900,000 - 850,000 lbs.
  - Brown trout – 200,000 – 42,600 lbs.
  - Brook trout – 100,000 – 26,000 lbs.
  - Cutthroat trout – 9,000 – 2,100 lbs.
  - Eggs – 6,000,000 Rainbow trout
  - Eggs - 450,000 Brook trout
- 13 projects in GA-TN
  - Rainbow trout – 430,000 – 132,000 lbs.
  - Brown trout – 200,000 – 42,600 lbs.
  - Brook trout – 18,000 – 8,000 lbs.
  - Lake trout – 70,000 – 4,600 lbs.
  - Eggs – 1,000,000 Rainbow trout
  - Eggs - 185,000 Brook trout



*Mussel cage culture at mitigation hatcheries*





**Barrens topminnow**



**Marked hatchery Yazoo darter  
recaptured one year after release**



Warmwater National Fish Hatcheries

# Non-Traditional Fisheries



*Gopher frog*

*How to get a gopher tortoise to hold still while you weigh it →*









## Florida grasshopper sparrow

Biologists fear an unexplained plunge in population has left fewer than 200 in existence, possibly making the small bird the most highly endangered in North America.

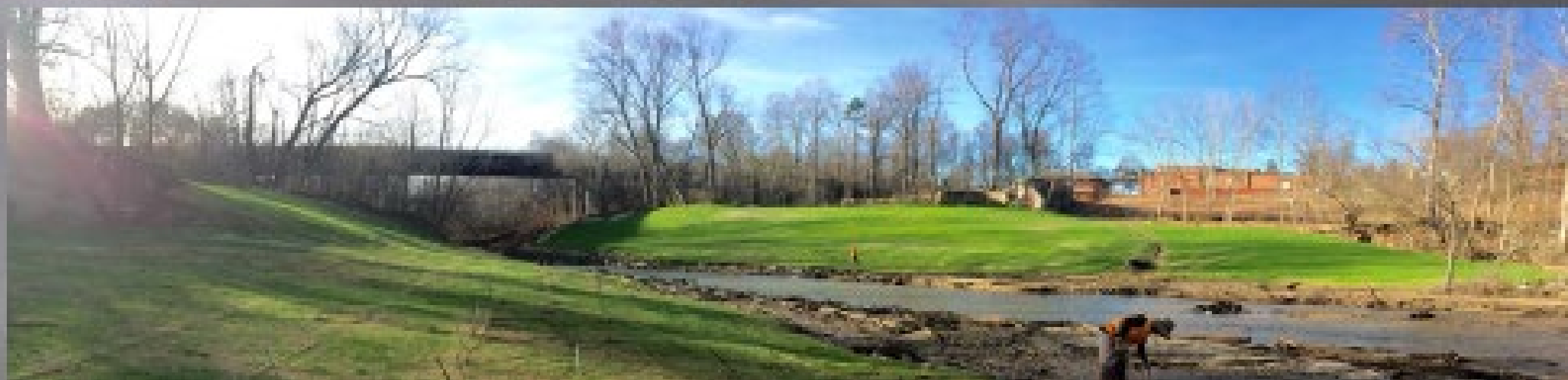




# Fish and Wildlife Conservation Offices



# Shuford Dam - NC



# Aquatic Invasive Species



← Northern snakehead

Zebra mussels on native mussel →





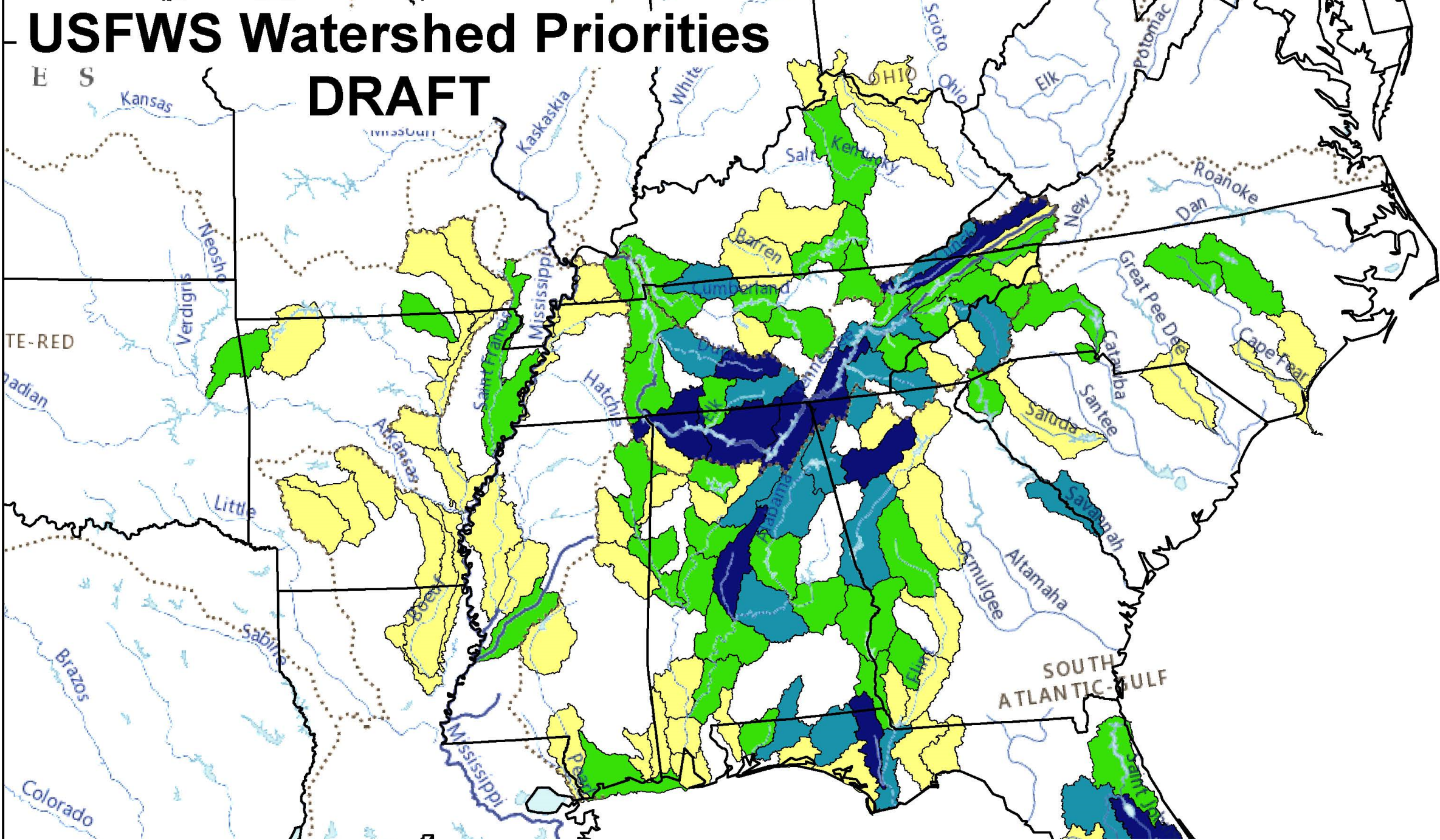
## Invasive carp



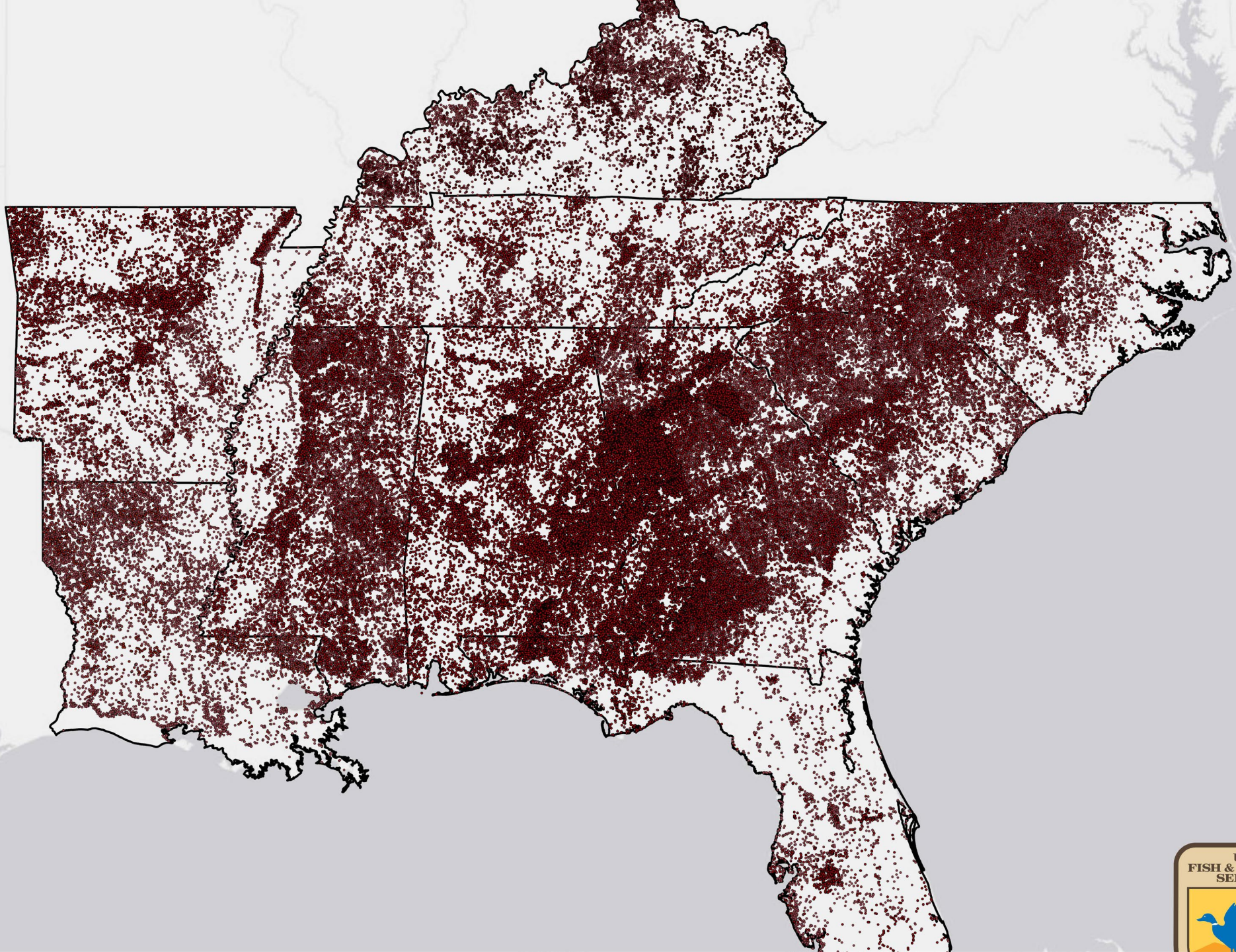


# USFWS Watershed Priorities

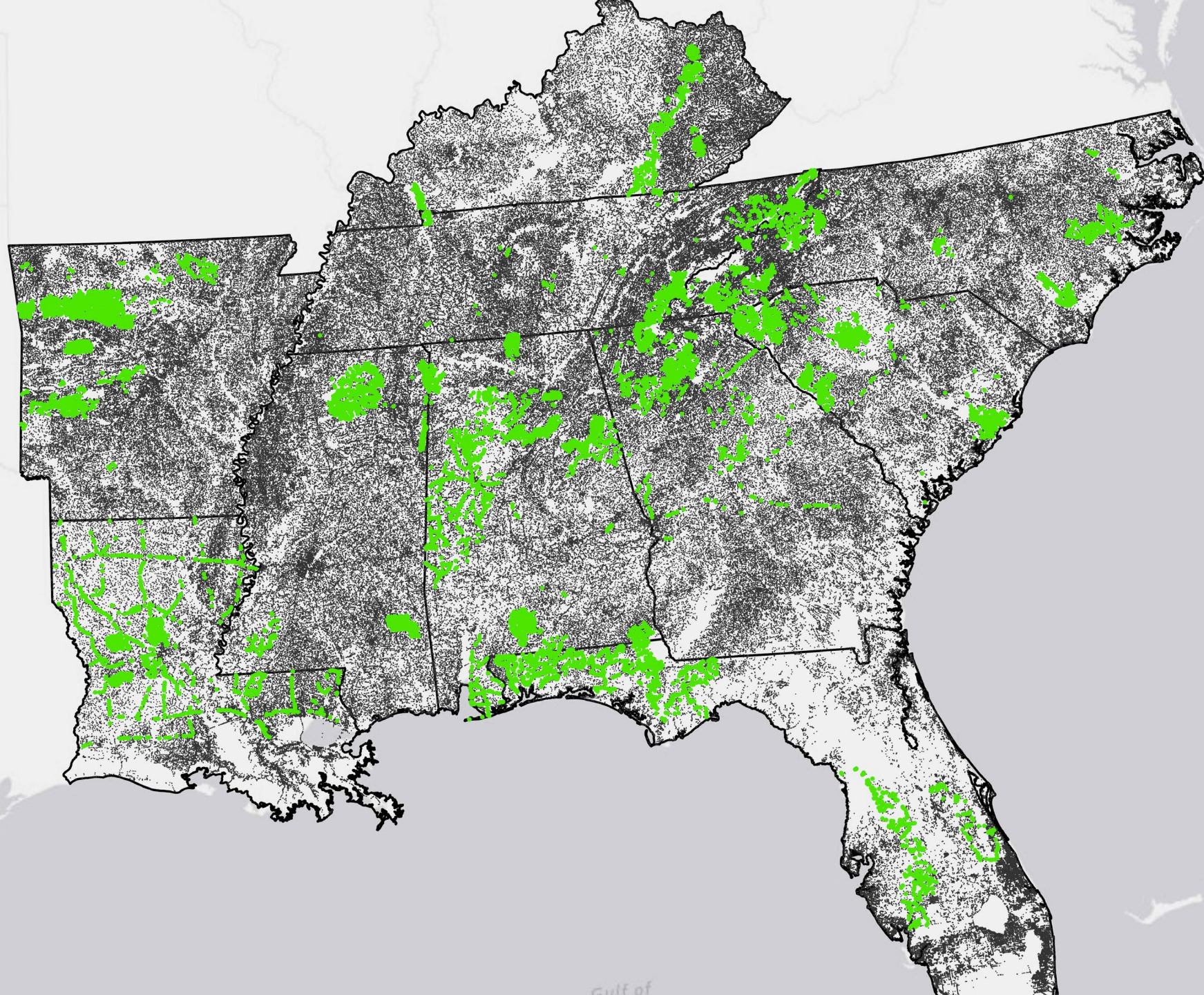
## DRAFT











Gulf of